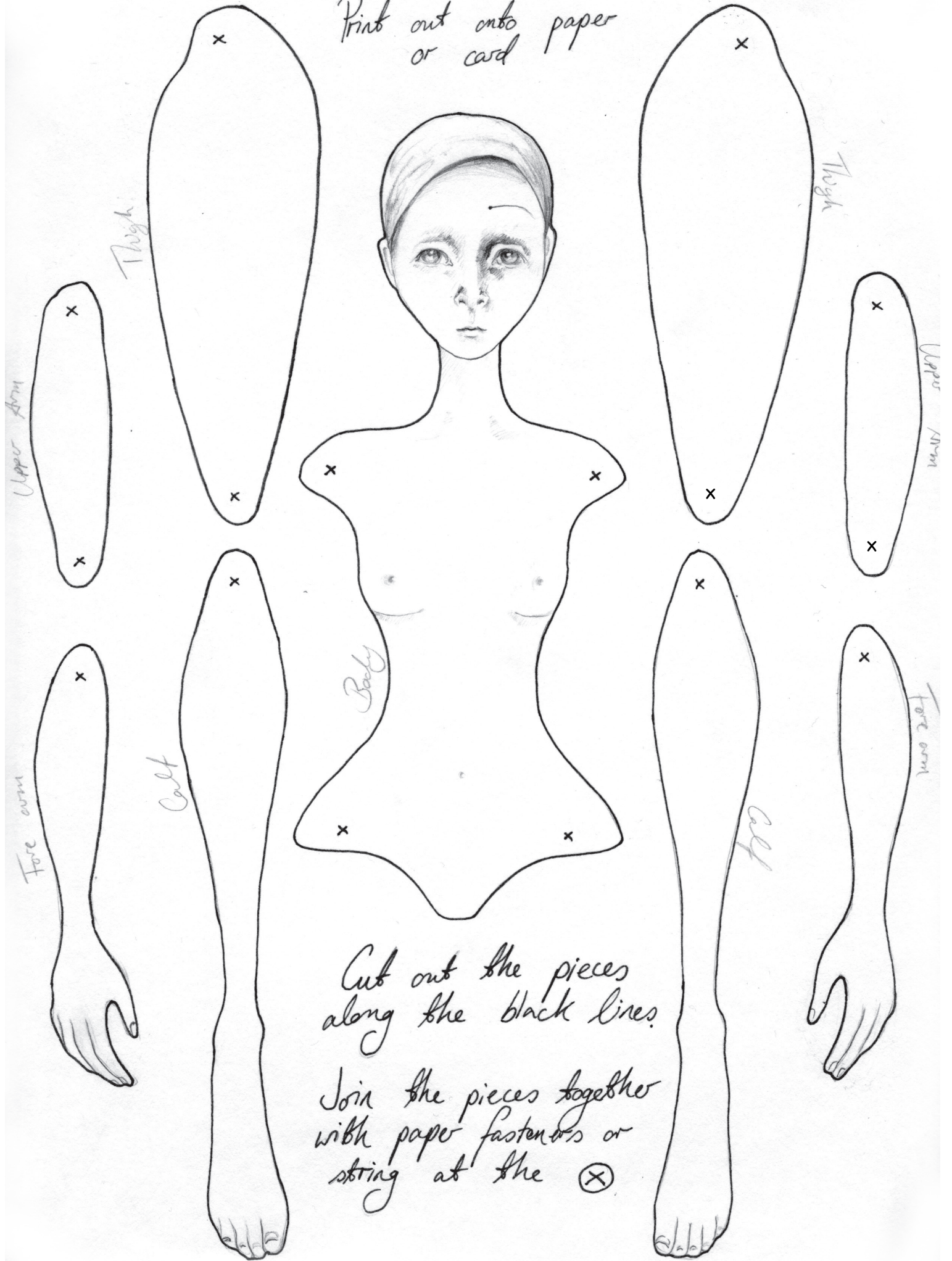
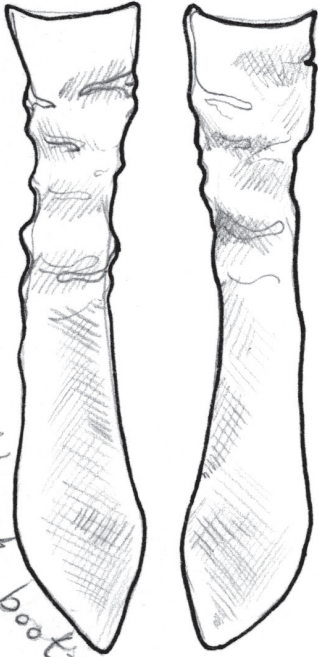
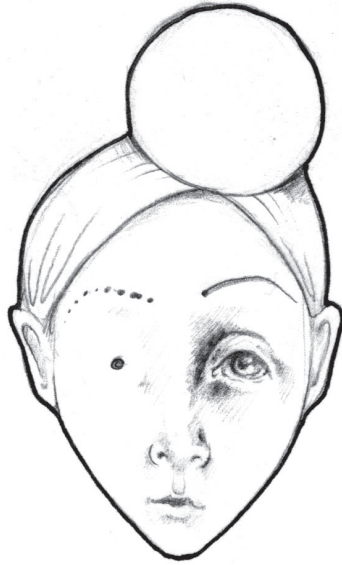


Print out onto paper  
or card

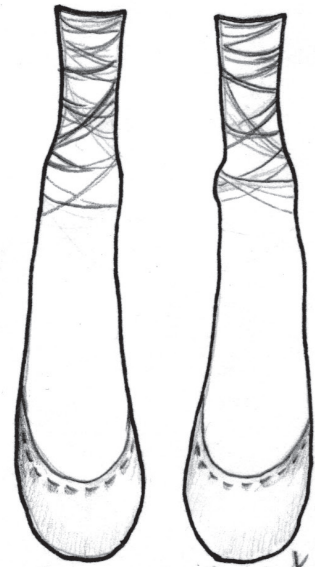


Cut out the pieces  
along the black lines.

Join the pieces together  
with paper fasteners or  
string at the (X)



*Nymph boots*



*Ballet shoes*



*Stripy stockings*

Customise your doll by gluing a different face and hair style over the original head, or glue new shoes over her bare feet.

Glue or paint her or leave her black and white.

Love from  
The Pale Rock